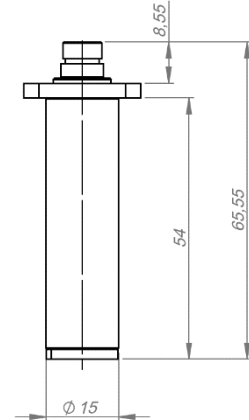
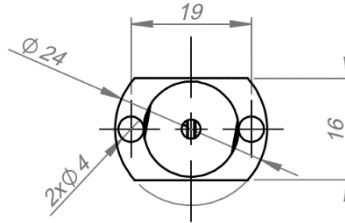


Single Emitter

C-Series λ 375 - 2200 nm



Features:

Compact size
Fiber-coupled
SMF and PMF available
Reverse voltage protection

Suitable for:

Automatics and robotics
Metrology
Bio-medics

Imaging
Guidance
Illumination

Technical specifications ^(1,2)	
Wavelength ⁽³⁾ [nm]	375 - 2200
Linewidth [nm]	wavelength dependent
Optical power ⁽⁴⁾ [mW]	1 - 200
Power stability	0.5% rms @ 8 h
Operating current [mA]	wavelength dependent
Voltage @ connectors [V]	5 or 9
Pulse width [μ s]	10 up to CW
Pulse repetition rate [kHz]	CW up to 30
Power modulation depth [%]	0 - 100
Fiber type	single mode, polarization maintaining or multi-mode
Fiber core diameter [μ m]	fiber type dependent
Fiber numerical aperture	fiber type dependent
Fiber connector (detachable)	SMA, FC/PC, FC/APC
Fiber length [m]	2 - 3
Fiber collimator	optional
Electrical connection	flying wires
Reverse voltage protection circuit	built in
Operating temperature [°C]	(-10) - (+60)
Storage temperature [°C]	(-20) - (+70)
Laser class [EN-60825]	2 - 3B

- Specifications at 20 °C, at the beginning of the lifetime
- Specifications are subject to chips availability
- Other wavelengths on request
- Measured after fiber output

C-SERIES / 375 - 2200 nm
Version: 1.0.0.0 October 2021
Product specification are subject to change without notice.
For complete details, please contact your local MONOCROM sales representative.

MONOCROM S.L.
C/Vilanoveta 6
08800 Vilanova i la Geltrú
Spain

T. +34 938 149 450
E. sales@monocrom.com
www.monocrom.com

UNE EN ISO 9001:2015