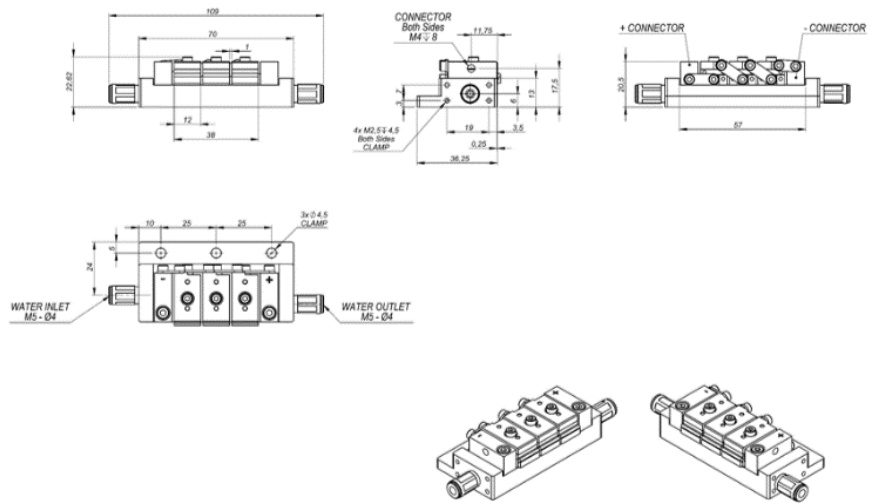


Actively Cooled Linear Laser Array

LB03 λ 640-2200 nm



Features:

- Improved cooling efficiency
- No "smile" effect
- Number of laser bars: 3
- Central wavelength on demand
- Real macro-channels cooling

Suitable for:

- Optical pumping
- Illumination
- Imaging

Technical specifications ⁽¹⁾	
Wavelength ⁽²⁾ [nm]	640 - 2200
Spectral width, FWHM [nm]	~ 5
Stack peak power ⁽³⁾ [W]	CW 250 per laser bar / QCW 500 per laser bar
Operating current [A]	CW <180 / QCW <450
Voltage @ connectors ⁽⁴⁾ [V]	~ 2 per laser bar
Pitch between centers [mm]	12.5 -13.5
Bar smile (PV) [μm]	< 0.3
Coolant flow [l/min]	1.5 - 2.0
Coolant pressure [bar]	2.5 - 3.5
Coolant temperature ⁽⁵⁾ [°C]	Non-condensing -25
Coolant	90% deionized water + 10% ethylene glycol
Electrical connections	2 x M4 threads
Water connections	2 x Ø 4 mm fittings
Expected lifetime	> 20000 h
Laser class (EN-60825)	4

1. Specifications at 20°C, in the beginning of lifetime
2. Maximum ratings are NOT all achievable at a time
3. Number of Laser bars = 3
4. Voltage from the power supply must be higher, as due to high current there will be a voltage drop in the cables
5. The coolant temperature must be adjusted to get the right central wavelength according to the data supplied with each unit

LB03 / 640-2200 nm
 Version: 1.0.0.0 October 2021
 Product specification are subject to change without notice.
 For complete details, please contact your local MONOCROM sales representative.

MONOCROM S.L.
 C/Vilanoveta 6
 08800 Vilanova i la Geltrú
 Spain

T. +34 938 149 450
 E. sales@monocrom.com
www.monocrom.com

UNE EN ISO 9001:2015